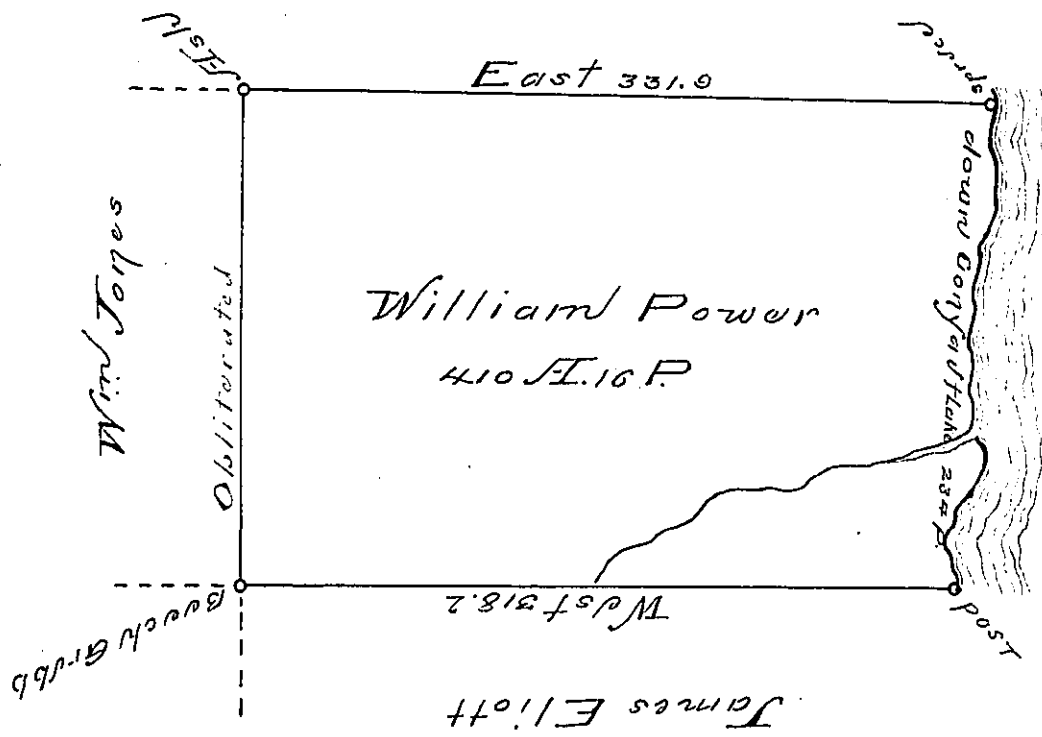


John Beatty



Codr Lake  
 S. 15 W. 32  
 South 60  
 S. 10 W. 22  
 S. 40 E. 42  
 S. 37 1/2 W. 47  
 S. 31 W. 31  
 234 P.

Situated on the West Side of French Creek  
 in Allegheny County containing 401 Acres and 16 P.  
 and alligned and officia plant for Roads &c.

Surveyed the 2<sup>d</sup> Day of June 1795, In pursu-  
 ance of his improvement Dated the 1<sup>st</sup> Day of  
 June 1795.

To  
 Danl. Brodhead Esq. } Wm. Power Esq.  
 Surveyor General }

IN TESTIMONY that the above is a copy of the original remaining on file in the  
 Department of Internal Affairs of Pennsylvania, made con-  
 formably to an Act of Assembly approved the 16th day of  
 February, 1833, I have hereunto set my Hand and caused  
 the Seal of said Department to be affixed at Harrisburg, this

— twentieth day of February — 1895.

J. C. P. [Signature]  
 Secretary of Internal Affairs.